

A



Plastic Safety Signs

- Yellow sign with black and red message attracts immediate attention
- Bilingual English/French
- Rugged, durable and portable
- Folds flat for space saving
- Dimensions: 12" W x 24" H

A Caution Wet Floor Safety Sign

710CWF Caution Wet Floor 6/cs. 11 lb

B 710 Safety Signs

7100M Cleaning in Progress 6/cs. 11 lb

7100M No Entry 6/cs. 11 lb

7100M Out of Service 6/cs. 11 lb

7100M Caution Work Area 6/cs. 11 lb

B



3-Sided Safety Cone

C TriVu™ 3-Sided Safety Sign

- 40" high, tallest safety sign available
- High visibility Fluorescent yellow/green sign demands attention
- Helps reduce slip & fall injuries and liabilities
- 3-sided "viewing" from a distance of 35' away
- 34% more "viewing" caution space per side than 4-sided cones
- Three convenient carrying handles
- Keyhole accessory opening
- Stable, durable construction, stackable
- Dimensions: Base-14³/₄" W; Top-4³/₄" W x 40" H

9140AM Caution Wet Floor 3/cs. 18 lb

D TriVu™ Lock-On Triangular Sign

- "Attention getting" triangular shaped red warning sign
- International caution/warning symbol on both sides
- Locks securely on 9140AM TriVu™ for extra attention
- Dimensions: 12³/₁₆" W x 11" H

9140S Exclamation 1/cs. 1 lb

E TriVu™ Chain

- 2" x 20' yellow/green plastic chain secures conveniently into keyhole opening on 9140AM TriVu™ and connects to another to act as barrier or security for large area
- Dimensions: 2" links x 20' L

9140C 20' L Yellow/Green 1/bag 0.5 lb

F TriVu™ Light

- Lock-in flashing Light Emitting Diode (LED) hazard light securely fits into 9140AM TriVu™ for maximum attention
- Light is battery operated and lasts up to 300 hours
- Operates on 2 "AA" batteries (not included)

9140L Red/Black 1/cs. 1 lb

G TriVu™ Weight Ring

- Weight ring slips easily over 9140AM TriVu™ and tightly to base for added stability
- Dimensions: 15" L x 15" W x 3/4" H

9140W Black 1/cs. 5.5 lb

C



Imprints

Available

Spring Loaded Safety Cones

A Handy Cone Caution Wet Floor Cone

- Bilingual English/French
- Reduces liability exposure
- Instant recognition of warning from any angle
- Spring-loaded sign stores in a compact tube that can be mounted anywhere
- More effective than conventional floor signs
- Mount tube near potential floor hazards
- Compact and simple to use
- Takes up less storage space than conventional signs
- Coated nylon fabric on fibreglass frame stands up to repeated use
- Easy to clean

18026 18" Orange 20/cs. 17 lb



Safety Cone

B Safety Cone

- Cone is 46" high moulded in bright yellow
- Trilingual English-French-Spanish safety warnings
- Two colour red & black message for increased visibility
- Attention-getting sign locks securely into the slot on top of the cone
- Stackable for economic storage and transportation
- Dimensions: 12" Sq. Base x 46" H

1246CWF with Red Top Sign 5/cs. 21 lb



Safety Pylons

C Safety Pylons

- Slim-line design provides wind resistance
- Wide weighted base adds to stability
- Flanges on base of cone provide airflow and prevent tipping of cone
- Orange pylon with embedded "Wet Floor" message that will not scratch off
- Rugged PVC construction
- Dimensions for 13NI and 13WF: 10 1/2" Sq. x 18" H

13NI No Imprint 6/cs. 18 lb

13WF Wet Floor 6/cs. 18 lb





Chemical Resistant Latex Gloves

NOTE: All gloves are sold per dozen

A Yellow Flock Lined Latex

- 16 mil thickness, 12" length, chlorinated finish, embossed
- Use for general cleaning, maintenance, janitorial services, hospital and housekeeping
- Chemically resists mild detergents, mild acids, alkalies, animal fats, vegetable oils and germicides

Individually Polybagged

- 1 pair per poly bag, 12 poly bags per package

13835 ♦ Small 12 prs./pk. 10 dz./cs. 15 lb

13836 Medium 12 prs./pk. 10 dz./cs. 15 lb

13837 Large 12 prs./pk. 10 dz./cs. 20 lb

13838 Ex Large 12 prs./pk. 10 dz./cs. 20 lb

Bulk Packed

- 12 pairs per bulk package

13839 ♦ Small 12 prs./pk. 10 dz./cs. 15 lb

13840 ♦ Medium 12 prs./pk. 10 dz./cs. 15 lb

13841 Large 12 prs./pk. 10 dz./cs. 20 lb

13842 Ex Large 12 prs./pk. 10 dz./cs. 20 lb

Chemical Resistant Nitrile Gloves

B Green Flock Lined Nitrile

- 15 mil thickness, 13" length, USDA compliant, non-slip grip
- Use for strong chemicals, stripping, degreasing, oven cleaning, harsh solvent, acid handling, auto, poultry & meat processing and dishwashing

8217S ♦ Small 12 prs./pk. 6 dz./cs. 13 lb

8217M Medium 12 prs./pk. 6 dz./cs. 13 lb

8217L Large 12 prs./pk. 6 dz./cs. 13 lb

8217XL Ex Large 12 prs./pk. 6 dz./cs. 13 lb

Disposable Nitrile Gloves

C Disposable Nitrile General Purpose Gloves

- Powder Free, 4 mil thickness, 9½" length
- Ambidextrous with textured grip
- Puncture resistant
- Use for lab work, chemical or small parts handling, etc.

8644M Medium 100/bx. 1000/cs. 18 lb

8644L Large 100/bx. 1000/cs. 18 lb

8644XL Ex Large 100/bx. 1000/cs. 18 lb

D Disposable Nitrile Exam Gloves

- Powder Free, 4 mil, 9½" length with beaded cuff
- Textured outer surface
- Ambidextrous
- Use for medical, dental, lab work, handling blood and other bodily fluids, foodservice

8645M Medium 100/bx. 1000/cs. 18 lb

8645L Large 100/bx. 1000/cs. 18 lb

8645XL Ex Large 100/bx. 1000/cs. 18 lb

♦ Non-stocked item requires special order

Disposable Powdered Latex Gloves

A Latex Exam (Non-Sterile)

- Cornstarch powdered
- Meets FDA requirements
- Medical grade
- Helps protect against virus and disease
- Use for medical and dental, lab work, cleaning and blood spills; natural colour

| | | | | |
|-----------------|-----------|---------|-------------|-------|
| 8620M | Medium | 100/bx. | 10 bxs./cs. | 19 lb |
| 8620L | Large | 100/bx. | 10 bxs./cs. | 19 lb |
| 8620XL ♦ | Ex. Large | 100/bx. | 10 bxs./cs. | 19 lb |

B Latex General Purpose/Food Service

- Cornstarch pre-powdered
- Natural colour
- Use for assembly, cleaning, manufacturing work, lab work, housekeeping and any non-medical application needing dexterity

| | | | | |
|--------------|--------|---------|-------------|-------|
| 8621M | Medium | 100/bx. | 10 bxs./cs. | 24 lb |
| 8621L | Large | 100/bx. | 10 bxs./cs. | 24 lb |

Disposable Latex General Purpose Gloves

C Disposable Latex General Purpose Gloves

- Powder Free, 5 mil with rolled cuff
- Natural colour
- Use for food handling and preparation, assembly and manufacturing and any non-medical application requiring dexterity

| | | | | |
|---------------|----------|---------|-------------|-------|
| 8625M | Medium | 100/bx. | 10 bxs./cs. | 19 lb |
| 8625L | Large | 100/bx. | 10 bxs./cs. | 19 lb |
| 8625XL | Ex-Large | 100/bx. | 10 bxs./cs. | 19 lb |

Glove Dispenser

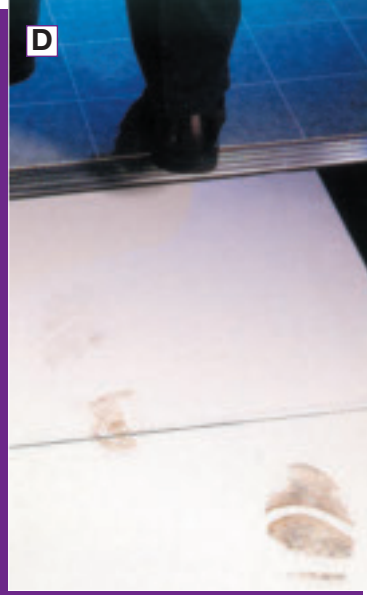
D Protective Glove Dispenser

- Fits most 100-pack dispenser boxes of disposable gloves
- Attractive design
- Large opening for easy glove removal
- Moulded in clear acrylic to see the type of glove
- Wall mount horizontally or vertically with two-way tape (included)
- Dimensions: 10½" L x 4" D x 6" H

| | | | |
|-------------|---------------|--------|-------|
| 8615 | Clear/Acrylic | 12/cs. | 25 lb |
|-------------|---------------|--------|-------|

♦ Non-stocked item requires special order





Grit & Barricade Tape

A SafetyTrack® Black Grit Safety Tape

- Abrasive, non-slip, high traction safety tape
- Reduces possible hazards quickly and economically
- Provides long life protection against slips, trips and falls

Medium Coarse SafetyTrack® Rolls

| | | | | |
|--------|-------|-----------|--------|--------|
| 31001 | Black | 1" x 60' | 12/cs. | 9.5 lb |
| 31002 | Black | 2" x 60' | 6/cs. | 9.5 lb |
| 31004 | Black | 4" x 60' | 3/cs. | 9.5 lb |
| 310012 | Black | 12" x 60' | 1/cs. | 9.5 lb |

B Barricade Tape

- Made of heavy duty polyethylene
- Printed black on yellow
- Comes in a convenient, disposable dispenser
- 3" x 1000' per roll

| | | | | |
|------|---------|--|--------|------|
| 7328 | Caution | | 1 roll | 5 lb |
|------|---------|--|--------|------|

Right to Know

C Right To Know Centre

- Provides high visibility and instant accessibility to important chemical hazard information
- Holder/Sign is made of durable polystyrene
- Includes 1 1/2" three ring binder for MSDS to keep together
- Dimensions: 4" D x 14" W x 20" H

| | | | | |
|------|---------------------|--|-------|------|
| 7919 | Red/White | | 6/cs. | 7 lb |
| 7920 | Red/Yellow (Deluxe) | | 1/cs. | 2 lb |

Contamination Floor Mat

D Disposable Contamination Control Floor Mat

- Step N' Clean® contamination matting
- Controls your dust and dirt
- Keeps "clean rooms" clean
- Cleans dirt and particulate matter as you walk
- For areas such as clean rooms, hospitals, food processing plants, breweries and precision manufacturing
- 120 mats per case (30 sheets/mat, 4 mats/case)
- Dimensions: 47" L x 18" W

| | | | | |
|------|-------|--|-------|-------|
| 8140 | White | | 4/cs. | 14 lb |
|------|-------|--|-------|-------|

Safety Glasses

E Chemical Splash Goggles with Anti-Fog

- Indirect ventilation vents
- Meets CAN/CSA-Z94.3-92 requirements
- Meets ANSI Z87.1 1989 US standards
- Polycarbonate anti-fog lens

| | | | | |
|------|-------|--|-----------|-------|
| 7320 | Clear | | 5 dz./cs. | 13 lb |
|------|-------|--|-----------|-------|

F Fronrunner™ Wraparound

- Adjustable lock-in temples
- Maximum coverage at brow and sides
- Clear high impact and scratch-resistant polycarbonate lenses provide 99.9% UV protection
- Meets ANSI Z87.1 1989 US standards

| | | | | |
|-------|-------------|--------|------------|-------|
| 7334B | Black Frame | 12/bx. | 12bxs./cs. | 21 lb |
|-------|-------------|--------|------------|-------|

Bloodborne Pathogen Kit

A Bloodborne Pathogen Kit

- Complies with OSHA Bloodborne Pathogen Rule 29 CFR 1910.1030
- Heavy-duty plastic case with handle and safety latch
- Includes: 1 pair disposable gloves, 1 pair disposable shoe covers, 1 disposable apron, 2 scoops/scrapers, 2 red biohazard bags with ties, 1 disposable towel, 1 pair protective eyewear, 1 isolation mask, 1 packet of absorbent powder (3 oz), 2 antiseptic wipes, Material Safety Data Sheets, 1 instruction sheet, 1 disposable wipe with HIV-1 tuberculocidal claim

● Refill kit available

7351 12" W x 6" H x 3" L 6/cs. 8 lb



Chemical & Waste Containment

B Oily Rag Cans

- Ideal for oily rags saturated with flammable liquids and other chemicals, shavings, stampings, paint cloths, etc.
- Foot operated with trilingual labels
- Underwriters Laboratories listed and required by OSHA (Occupational Safety & Health Administration) Regulations
- Made of heavy-gauge zinc-coated steel
- The body extends down to the floor, eliminating the need for legs which can bend and work loose at the rivets
- Recessed ventilated bottom eliminates the possibility of spontaneous combustion
- Heavy circular beading provides additional strength and rigidity

● Dimensions for **09101** & **09100**: 12¹/₂" Dia. x 19¹/₄" H

09101 Safety Yellow 6 US Gal. 1/cs. 11 lb

09100 Red 6 US Gal. 1/cs. 11 lb

● Dimensions for **09301** & **09300**: 13³/₄" Dia. x 20³/₄" H

09301 Safety Yellow 10 US Gal. 1/cs. 13 lb

09300 Red 10 US Gal. 1/cs. 13 lb



Large Metal Step-Ons

- Foot operated "flip top" allows hands-free operation in compliance with infection control regulations
- Newly developed nylon bag hooks hold poly bag conveniently in place and do not interfere with easy removal of bagged waste
- Heavy gauge cold rolled steel with chip proof enamel
- A vinyl bumper and foam quiet stripping around lid
- Rubber feet increase stability and prevent movement
- Dimensions for **13300**: 11¹/₂" Sq. x 22¹/₂" H

C 13300 White 10 US Gallon 1/cs. 20 lb

● Dimensions for **13400**: 14" Sq. x 30" H

D 13400 White 21 US Gallon 1/cs. 30 lb

● Dimensions for **13600**: 18" Sq. x 30" H

E 13600 White 36 US Gallon 1/cs. 39 lb

